



## Outpatient Facility Design Standards

### Exterior Details

## Outpatient Facility Design Standards



**BRICK**  
Hebron Brick Company  
Color: Brandywine  
Size: Utility



**STONE**  
Michels Stone  
Color: Tumbled Fond du Lac  
Stone Seamface



**GREEN METAL PANEL**  
Dri-Design  
Color: Two-Coat 70%  
Kynar-CFT10159 Pantone 626U



**CHAMPAGNE METAL PANEL**  
APOLIC Composite Panels  
Color: Valspar 399B609B  
"Champagne Bronze"



**WOOD METAL PANEL**  
APOLIC Composite Panels  
Color: Italian Walnut



**ARCHITECTURAL PRECAST**  
Marcstone  
Color: No. 6285



**WINDOW FRAMES**  
Storefront & Curtain Wall  
Color: Valspar 399B609B  
"Champagne Bronze"



**VISION GLASS**  
Viracon  
Color: VNE 1-63



**SPANDREL GLASS**  
Viracon  
Color: Viraspan Dark  
Grey V901



**BRICK GROUT**  
BMI  
Color: P2910

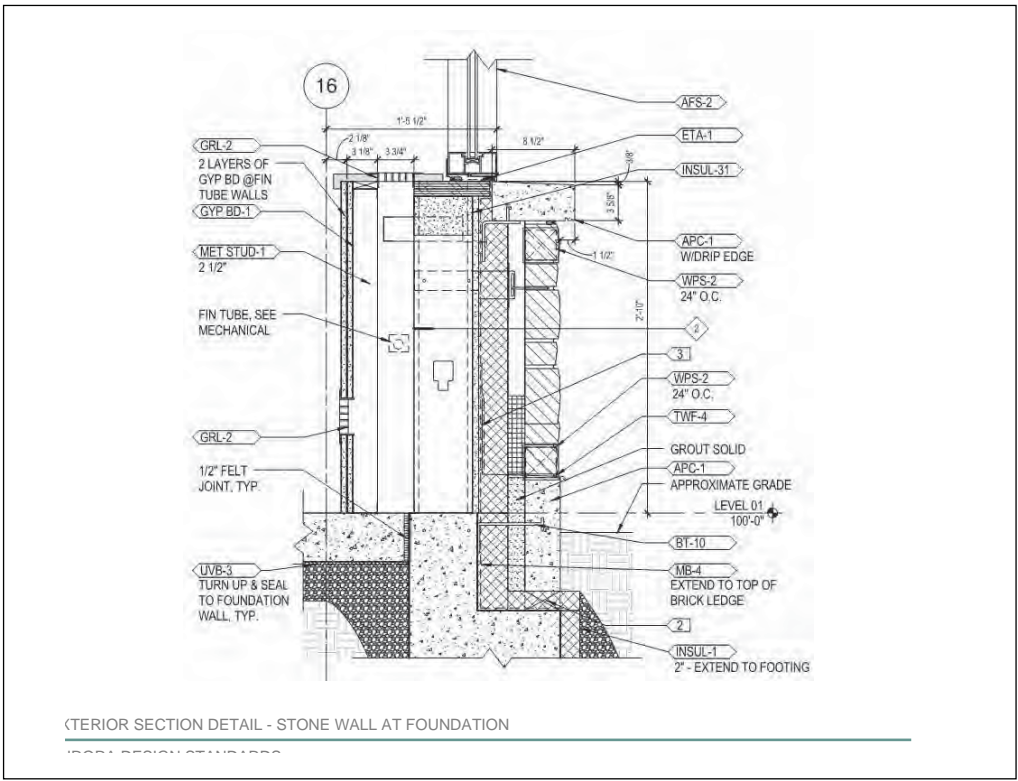
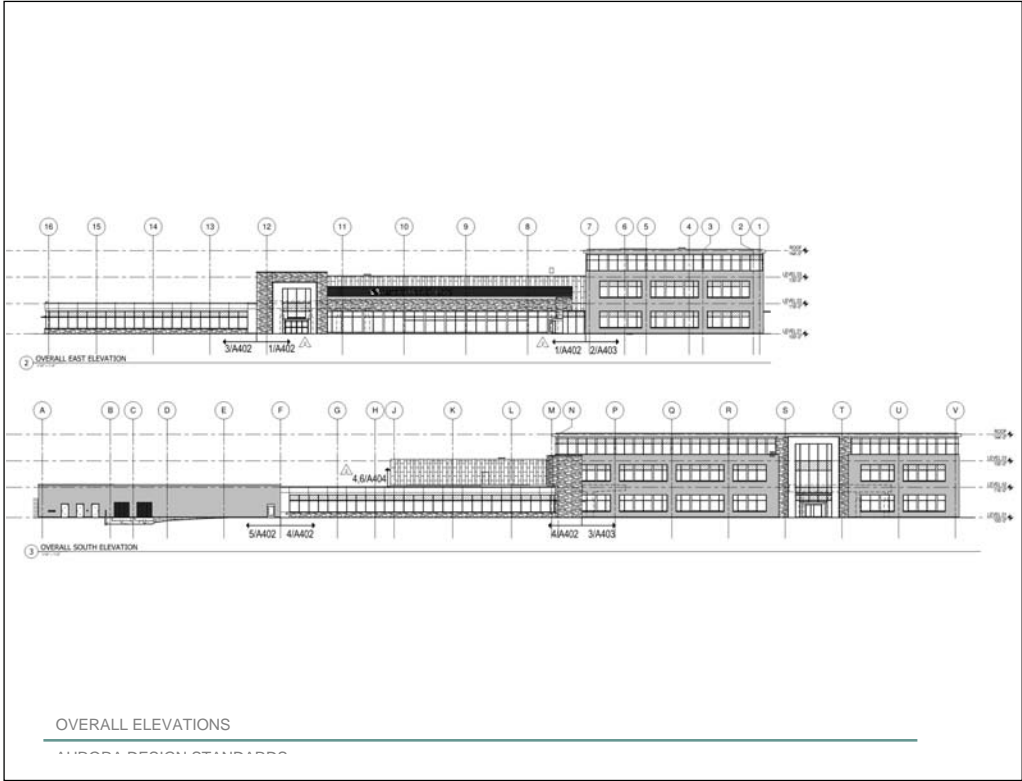


**STONE / PRECAST GROUT**  
BMI  
Color: P3210

EXTERIOR MATERIALS

# AURORA STANDARDS

**zimmerman**  
ARCHITECTURAL STUDIOS, INC.



# AURORA STANDARDS



BURLINGTON, WI

## AURORA BRANDED PROTOTYPE





WEST ALLIS, WI (UNDER CONSTRUCTION)



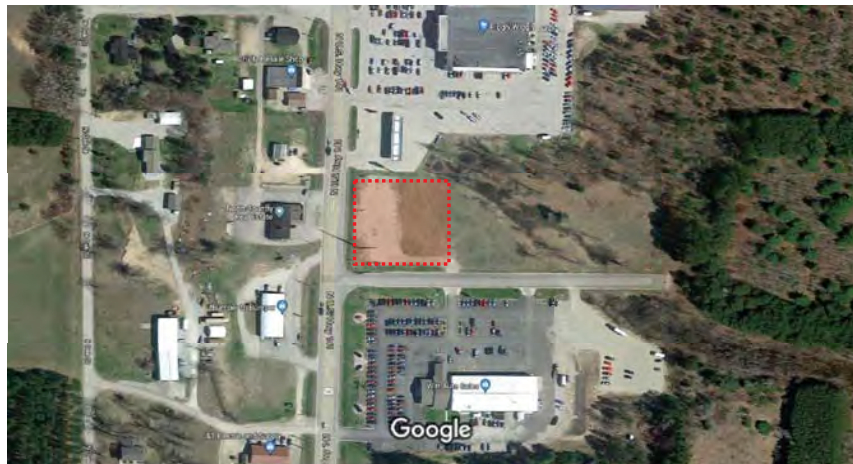
MANITOWOC, WI (UNDER CONSTRUCTION)

## AURORA BRANDED PROTOTYPE





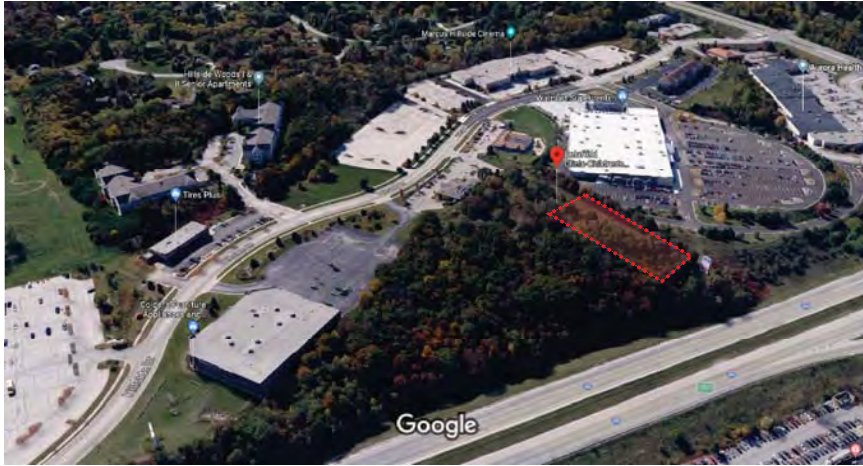
WATERTOWN, WI- PRO HEALTH CARE



CRIVITZ, WI- AURORA HEALTH CARE



## FLAT ROOF PRECEDENT



DELAFIELD, WI- CHILDREN'S HOSPITAL OF WISCONSIN



STURTEVANT, WI - WHEATON FRANCISCAN HEALTH

## FLAT ROOF PRECEDENT





1



2



3



VIEWS SOUTH TO SITE FROM NORTH HWY 83

# Mukwonago Health Center Mukwonago, WI





VIEW FROM SOUTHBOUND HWY 83 LOOKING SOUTH-WEST

3

---

Mukwonago Health Center  
Mukwonago, WI

170077.00 | December 1, 2017 | Scale: NTS

**zimmerman**  
ARCHITECTURAL STUDIOS, INC.





VIEW FROM NORTH EAST



VIEW FROM SOUTH EAST

Mukwonago Health Center  
Mukwonago, WI