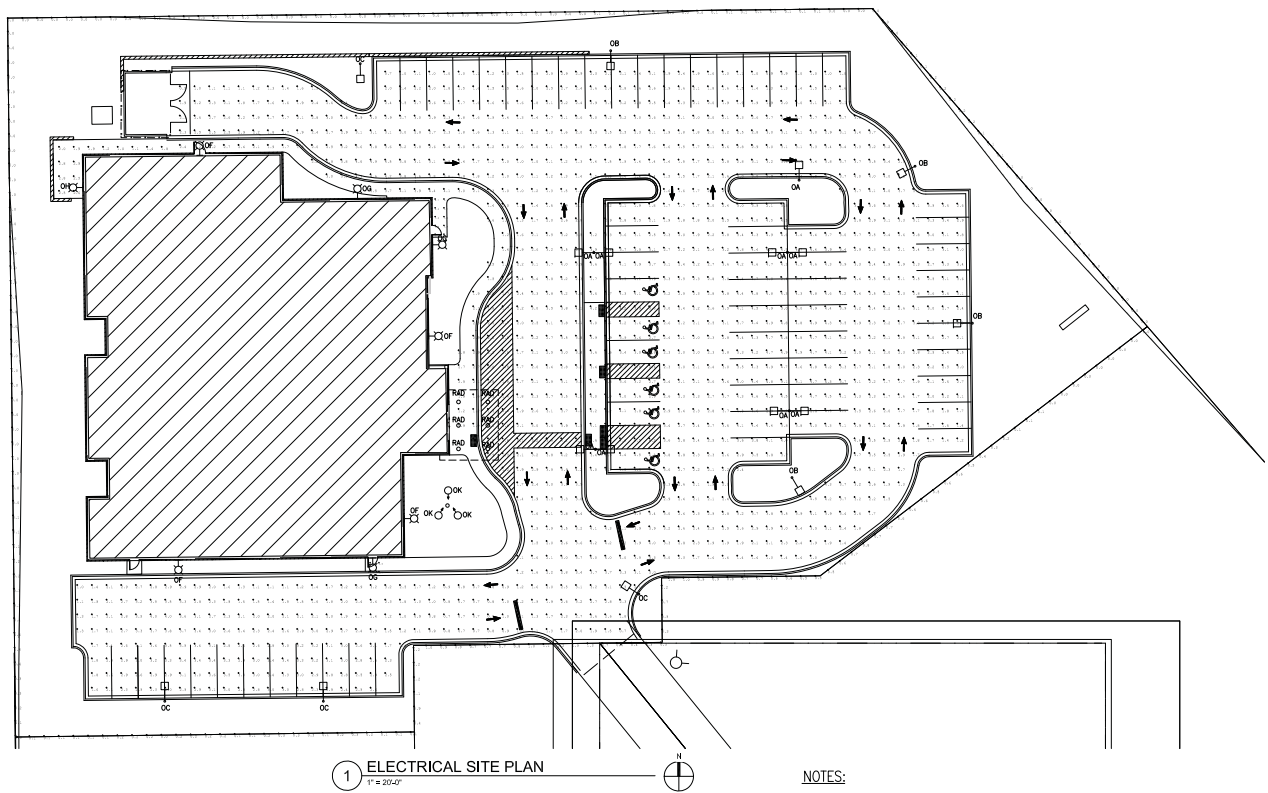


THE CLIENT AGREES TO INDEMNIFY AND HOLD THE ARCHITECT HARMLESS FROM ANY DAMAGE, LIABILITY OR COST, INCLUDING ATTORNEY'S FEES AND COSTS OF DEFENSE, ARISING OUT OF OR FROM ANY AND ALL SUCH CLAIMS, DAMAGES, LOSSES AND EXPENSES, INCLUDING REASONABLE ATTORNEY'S FEES AND COSTS OF DEFENSE, THAT THE ARCHITECT OR ANY SUBSIDIARY, AGENT OR EMPLOYEE INCURS IN CONNECTION WITH THE PERFORMANCE OF THE SERVICES AND DATA WITHOUT THE PRIOR WRITTEN CONSENT OF THE ARCHITECT.



1 ELECTRICAL SITE PLAN
1" = 20'-0"

LIGHTING FIXTURE SCHEDULE									
DES.	DESCRIPTION	LAMP DATA		VOLT	DEPTH	LIGHTING FIXTURE			SEE NOTE
		NO.	TYPE			MFR.	SERIES	OPTIONS/ACCESSORIES	
OA	ARM WTD. LED AREA LUMINAIRE 15" H. POLE, 3" W/ CONC. BASE TYPE III, 180° FULL CUTOFF	1	LED (INCLUDED) 2533A, DELIVERED 60W, 300mA, 40K	UNV	--	CREE	ARC-E507/3M/DA /04/E/UL/350/ H SERIES	18,26 H/LOW OUTPUT CONTROL	DRY POLE CONC BASE
OB	ARM WTD. LED AREA LUMINAIRE 15" H. POLE, 3" W/ CONC. BASE TYPE III, 180° FULL CUTOFF	2	LED (INCLUDED) 2533A, DELIVERED 60W, 300mA, 40K	UNV	--	CREE	ARC-E507/3M/DA /04/E/UL/350/ H SERIES	18,26 H/LOW OUTPUT CONTROL	DRY POLE CONC BASE
OC	ARM WTD. LED AREA LUMINAIRE 15" H. POLE, 3" W/ CONC. BASE TYPE III, 180° FULL CUTOFF	3	LED (INCLUDED) 2533A, DELIVERED 60W, 300mA, 40K	UNV	--	CREE	ARC-E507/3M/DA /04/E/UL/350/ H SERIES	18,26 H/LOW OUTPUT CONTROL	DRY POLE CONC BASE
OF	WALL WTD. LED LUMINAIRE TYPE II DIST., FULL CUTOFF	4	LED (INCLUDED) 4276, DELIVERED 42W, 300mA, 40K	UNV	--	CREE	SEC-E507/3M/WM /04/E/UL/350/ H SERIES	18,26	DRY SURF WALL
OH	WALL WTD. LED LUMINAIRE TYPE II DIST., FULL CUTOFF	5	LED (INCLUDED) 4276, DELIVERED 42W, 300mA, 40K	UNV	--	CREE	SEC-E507/3M/WM /04/E/UL/350/ H SERIES	18,26	DRY SURF WALL
OK	ADJUSTABLE LED SPOT LIGHT 2000L SPOT BEAM WET LOCATION LISTED	6	LED (INCLUDED) 2800L DELIVERED 36W, 3000K	UNV	--	E-COULITE	E-6L4 SERIES	18,26	DRY GRD STAN
RAD	8" ARM LED DOWNLIGHT 150W-SPOT CLEAR REFLECT, 7/8" W/ CONC. BASE, DIMMABLE	7	LED (INCLUDED) 150W DELIVERED 13W, 4000K	UNV	--	HALO	POE10/10011 POMMA/61011 SERIES	18,26	DRY REC VAR
ABBREVIATIONS:									
AR	AS REQUIRED	GRD	GROUND	NA	NOT APPLICABLE	S	STANDARD (HID)	VAR	VARIES
CONC	CONCRETE BASE	OPV	OPTIMUM BOARD	PS	PULSE START BALLAST	SPEC	SPECIAL	LAS	LENGTH AS SHOWN
E	ELECTRONIC	LAS	LENGTH AS SHOWN	PEND	PENDANT	STAN	STANTION	DRY	LED DRIVER
EXP	EXPOSED STRUCTURE	LIG	LAY-IN GRID	REC	RECESSED	SURF	SURFACE	DRY	LED DIMMABLE DRIVER
OPTIONS/ACCESSORIES CODE LISTING:									
01.	0.125" PATTERN 12 ACRYLIC LENS	10.	CUSTOM COLOR	21.	QUARTZ RESTRIKE				
02.	HOLLOPHONE 8246 LENS	11.	PENDANT MOUNT	22.	EMERGENCY OPERATION--				
03.	PAINT AFTER FABRICATION	12.	SAFETY CHAIN	23.	INTEGRAL WIND BATTERY				
04.	SPRING LOADED LATCHES	13.	NEMA HOOK, CORD AND PLUG	24.	LOCKING TYPE SOCKETS				
05.	FLUSH ALUMINUM DOOR FRAME	14.	WIRE GUARD	25.	SLOPE ADAPTER				
06.	ELECTRONIC BALLAST, TOTAL HARMONIC DISTORTION < 10%	15.	EMERGENCY BALLAST	26.	TWO BALLAST COVERS				
07.	FLUORESCENT DIMMING BALLAST	16.	TOP AND BOTTOM LENSING	27.	STANDARD FINISH TO BE SELECTED BY ARCHITECT				
08.	WHITE TRIM RING	17.	TIME DELAY	28.	277/24 VOLT TRANSFORMER				
09.	SEMI-OPHTHUS, LOW-REDUCED CLEAR ALZAK REFLECTOR	18.	WET LOCATION LABEL	29.	LEAD-CALCIUM BATTERY				
		19.	DAMP LOCATION CONSTRUCTION						
		20.	FURNISH WITH UNIVERSAL ARROWS AND RED STENCIL FACE						

NOTES:

1. PARKING LOT/DRIVE AREAS: 2.66fc AVG., 5.1fc MAX, 0.7fc MIN, 3.80:1 AVG/MIN, 7.29:1 MAX/MIN.

2. IN ORDER TO MAINTAIN MUKWONAGO SITE LIGHTING STANDARDS, SOME AREAS OF THE PROPERTY LINE MAY REQUIRE ADDITIONAL, CUSTOM BACKSHIELDS ON ADJACENT FIXTURES. ADDITIONAL SHIELDS ABOVE AND BEYOND WHAT IS OFFERED BY THE LIGHTING MANUFACTURER HAVE NOT BEEN FACTORED INTO THIS CALCULATION.

3. THE RESULTS OF THIS STUDY ARE TO BE VIEWED ONLY AS AN INDICATION OF POSSIBLE PERFORMANCE DUE TO VARIATIONS IN LED MODULES, LED DRIVERS, MANUFACTURING, LINE VOLTAGE, SITE CONDITIONS, ETC. A GUARANTEED LEVEL OF PERFORMANCE IS NOT POSSIBLE AND IS NOT NECESSARILY REPRESENTED BY THIS ANALYSIS.



2 TYPES OA / OB / OC
NOT TO SCALE
REFER TO LIGHTING FIXTURE SCHEDULE FOR SPECIFICATIONS



3 TYPE OH / OF / OG
NOT TO SCALE
REFER TO LIGHTING FIXTURE SCHEDULE FOR SPECIFICATIONS



4 TYPE OK
NOT TO SCALE
REFER TO LIGHTING FIXTURE SCHEDULE FOR SPECIFICATIONS



5 TYPE RAD
NOT TO SCALE
REFER TO LIGHTING FIXTURE SCHEDULE FOR SPECIFICATIONS

Zimmerman

ARCHITECTURAL STUDIOS, INC.

2122 West Mount Vernon Avenue | Milwaukee, WI 53233 | 414.475.5554

265 North 21st Street | Milwaukee, WI 53233 | 414.475.5554

414.773.9299 fax: 414.773.9500

NEC Project Number: 14000102

Consultant:

Harwood Engineering Consultants

255 North 21st Street | Milwaukee, WI 53233

414.475.5554 | 414.773.9299 fax: 414.773.9500

NEC Project Number: 14000102

Project:

Mukwonago Health Center

Location:

State Highway 83,
Mukwonago, WI

Key Plan:

PLAN COMMISSION SET

NOT FOR CONSTRUCTION

DATE: NOVEMBER, 22 2017

Sheet:

ELECTRICAL SITE PLAN

Scale: 1" = 20'

North

Revisions:

No.	Date:	Description:
1		
2		
3		
4		
5		
6		
7		
8		
9		
10		

Date:

Issue Date: 11-22-2017

Project No.: 170077.00

(Owner) Project No.:

Sheet No.:

CRE.01

© Copyright Zimmerman Architectural Studios, Inc.