



haag müller, inc.
Architecture • Engineering • Interiors

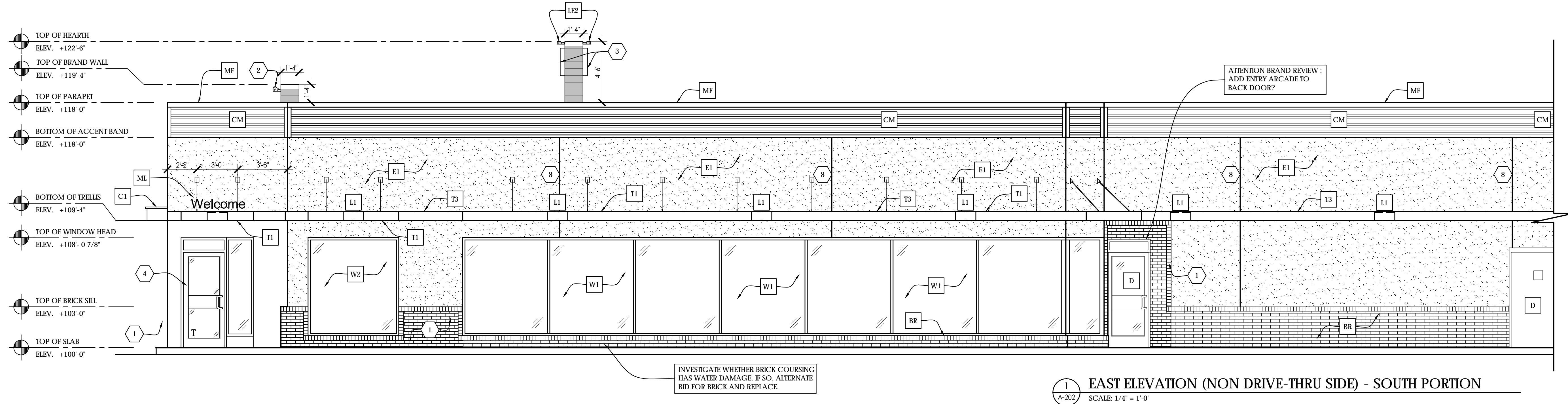
101 East Grand Avenue, Suite 1
Port Washington, Wisconsin 53074
262.268.1200 www.haagmuller.com

© 2017 haag müller, inc.

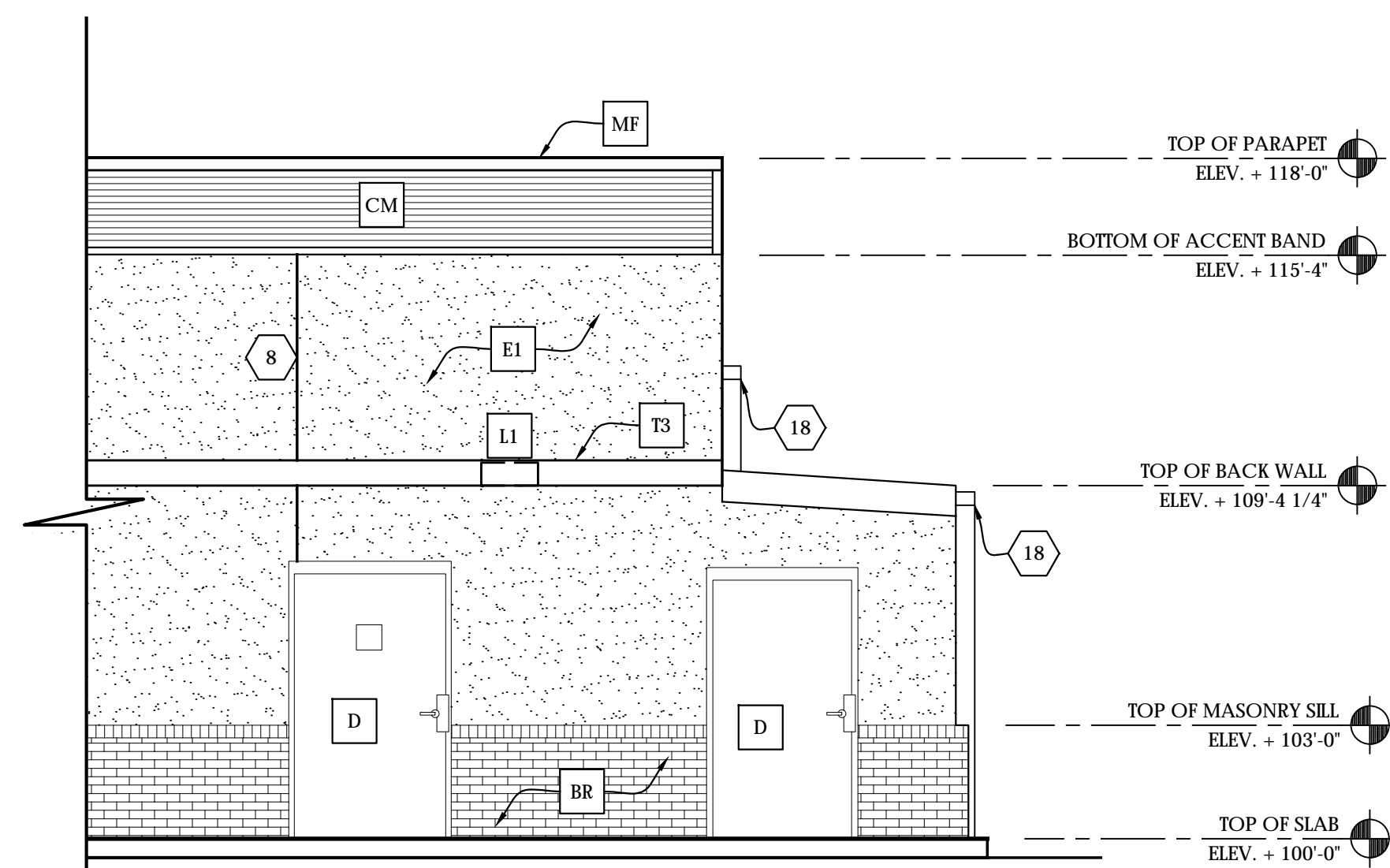


EXTERIOR ELEVATIONS
MAJOR REMODEL PROJECT
MCDONALD'S RESTAURANT (SITE ID # 480270)
1020 NORTH ROCHESTER STREET
MUKWONAGO, WISCONSIN

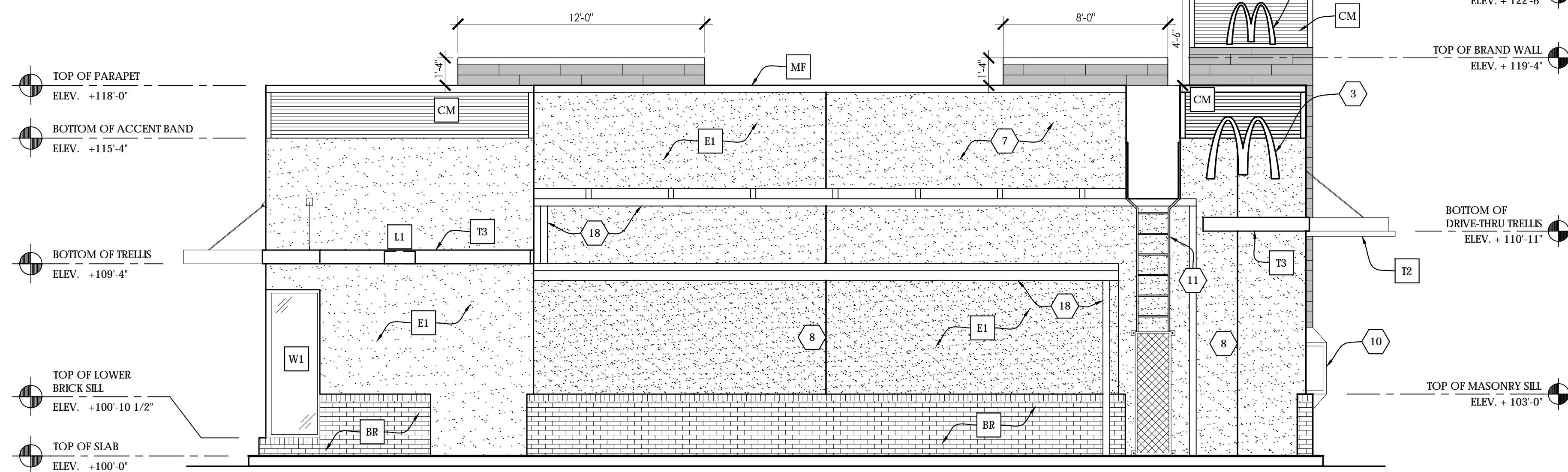
REVISIONS				
NO.	DATE	DESCRIPTION		



1 EAST ELEVATION (NON DRIVE-THRU SIDE) - SOUTH PORTION
A-202 SCALE: 1/4" = 1'-0"



2 EAST ELEVATION (NON DRIVE-THRU SIDE) - NORTH PORTION
A-202 SCALE: 1/4" = 1'-0"



3 NORTH ELEVATION (REAR)
A-202 SCALE: 1/4" = 1'-0"

ELEVATION KEYED NOTES - GROUP ONE NOTES:

THE FOLLOWING ELEVATION KEYED NOTES ARE ENCLOSED WITH A ☐ SYMBOL ON THE ELEVATIONS.

- | | | | |
|----|--|----|---|
| BR | EXISTING BRICK TO REMAIN. | MF | ALUMINUM EDGE FASCIA: BY METAL-ERA COLOR: SEE DETAIL 9/A-3.4. COLOR: CITYSCAPE. |
| C1 | CANOPY: 1'-6" DEEP BY 12" HIGH ILLUMINATED CANOPY (NO TIE-BACKS); SEE DETAIL ____ FOR MORE INFORMATION ON ENTRANCE ARCADE. COLOR: WHITE. | ML | "WELCOME" SIGN. CURRENT SIGN MANUFACTURER FOR SIGNAGE PACKAGE IS: EVERBRITE (414-529-3500). |
| C2 | CANOPY: 3'-0" DEEP BY 12" HIGH ILLUMINATED CANOPY WITH COLOR COORDINATED TIE-BACKS. SEE DETAIL 2 & 3/A-3.6. COLOR: WHITE (CANOPY & TIE-BACKS). | T1 | TRELLIS: 4'-0" DEEP BY 8" HIGH ALUM. WITH COLOR COORDINATED TIE-BACKS. SEE DETAIL 2/A-3.4. COLOR: CITYSCAPE. |
| C3 | CANOPY: 4'-0" DEEP BY 12" HIGH ILLUMINATED CANOPY WITH COLOR COORDINATED TIE-BACKS. SEE DETAIL 1/A-3.6. COLOR: WHITE (CANOPY AND TIE-BACKS). | T2 | D.T. WINDOW TRELLIS: 4'-0" DEEP BY 8" HIGH ALUM. WITH COLOR COORDINATED TIE-BACKS. SEE DETAIL 3/A-2.2. COLOR: CHARCOAL. PROVIDE 3" GOLD COLORED UNDERSCORE. NOTE: RECESSED LIGHTS SPACED 42" APART. CENTERED ON TRELLIS. SEE ELECTRICAL SHEETS. |
| CM | CORRUGATED METAL PANEL SYSTEM. SEE CORRUGATED METAL PANEL SYSTEM NOTES ON THIS SHEET AND DETAIL 1/A-3.5.
COLOR: CM1 = CITYSCAPE.
COLOR: CM2 = CHARCOAL GRAY. (DT WIN. SURROUND ON UNPAINTED BRICK BLDG.) | T3 | 2x8 ALUM. FASCIA BAND: SEE DETAIL 3/A-3.4 & ROOF PLAN. COLOR: CITYSCAPE. |
| D | EXISTING DOOR AND FRAME. PRIME & PAINT. COLOR: MATCH BASE PAINT COLOR. | TL | TILE: ARCADES AND BRAND WALL, EUROWEST: E-WOOD COLLECTION
COLOR: R9 BLACK. SIZE: 6 x 36. 1/4" RUNNING BOND.
WATERPROOFING SETTING MATERIAL AND GROUT BY MAPEI
GROUT COLOR: ULTRA COLORED PLUS - 47 CHARCOAL
GROUT WIDTH: 1/8" TO 3/16".
CONTACT: JAN DETER. (714) 937-7500 |
| E | WATER MANAGED E.I.F.S. (EXTERIOR INSULATION FINISH SYSTEM) OUTSULATION PLUS MAI BY DRIVE OR EQUIV. PROVIDE PANZER 20 IMPACT MESH IN ALL E.I.F.S. BELOW ELEV +108'-0". FINISH: HYDROPHOPIC. TEXTURE: SANDBLAST. IN ADDITION TO EXPANSION JOINTS LISTED BELOW, PROVIDE EXPANSION JOINTS AT INSIDE CORNERS, ALL OTHERS TO BE FIELD LOCATED PER MFG SPECS. SEE BUILDING SECTIONS & SHEET A-3. 7 FOR DETAILS. COLORS PER COLOR TABLE, THIS SHEET. COLOR: E1= BM FAIRVIEW TAUPE HC-85
COLOR: E2= BM IRON MOUNTAIN (2134-30) | | MOVEMENT JOINT (MJ): DILEX BWB100GS BY SCHLUTER SYSTEMS. COLOR: BLACK.
OUTSIDE CORNERS STRIPS: RONDEC R0100TSDA BY SCHLUTER SYSTEMS. COLOR: DARK ANTHRACITE. CONTACT: (800) 267-0817 |
| | | W1 | REPLACE FRAMES TO BE NATURAL ANODIZED ALUMINUM / ANODIZED DARK BRONZE. GLASS TO BE REUSED IN PLACE. |
| | | W2 | NEW STOREFRONT GLAZING AND FRAMES PER FLOOR PLAN. FRAME COLOR TO BE NATURAL ANODIZED ALUMINUM / ANODIZED DARK BRONZE. TEMPERED GLASS INDICATED WITH A "T" ON THE ELEVATIONS. |
| L | RADIAL WALL SCONCE. DOWNLIGHT ONLY. AVAILABLE THROUGH SECURITY LIGHTING. INSTALL PER MANUFACTURER'S INSTRUCTIONS. SEE ELECTRICAL SHEETS FOR SPECIFICATIONS AND ROOF PLAN FOR SPACING.
COLOR: L1 = SILVER
COLOR: L2 = WHITE | | |

ELEVATION KEYED NOTES - GROUP TWO NOTES:

THE FOLLOWING ELEVATION KEYED NOTES ARE ENCLOSED WITH A  SYMBOL ON THE ELEVATIONS.

1. NEW SILL BRICK FLASHING AT EXISTING HIGH SILL CONDITIONS AS NOTED PER DETAIL ____.
2. HIRAF LINEAR LED FACADE LIGHT TO BE INSTALLED ALONG FRONT OF COPING. AVAILABLE FROM SECURITY LIGHTING. INSTALL PER MANUFACTURER'S SPECIFICATIONS. SEE ELECTRICAL SHEETS AND ROOF PLAN.
3. ILLUMINATED McDONALD'S SIGNAGE: LED ILLUMINATED. SIGNS MUST BE CONTROLLED VIA PHOTOCELL OR A PROGRAMMABLE LIGHTING CONTROL PANEL PER WARRANTY REQUIREMENTS. CONTROLS BY E.C. COORDINATE WITH OWNER CONTROL TYPE: PHOTOCELL OR CONTROL PANEL. CURRENT SIGN MANUFACTURER FOR SIGNAGE PACKAGE IS: EVERBRITE (414-329-3500). UNDER SEPARATE PERMIT. FINAL SIGN PACKAGE TO BE APPROVED BY MUNICIPALITY.
4. NEW STOREFRONT ENTRANCE DOORS PER PLAN.
5. NEW SILL BRICK FLASHING AT EXISTING LOW SILL CONDITIONS AS NOTED PER DETAIL 8/A-3.4.
6. PAINT EXISTING GUTTERS AND DOWNSPOUTS TO MATCH CORRUGATED METAL PANEL.

7. NEW ROOF SCREEN: PAINT TO MATCH BUILDING BASE PAINT COLOR. PER MATERIAL COLOR TABLE. SEE DETAIL 3/A-2.2.
8. E.L.F.S. CONTROL JOINTS INSTALLED PER MANUFACTURERS REQUIREMENTS.
9. MOVEMENT JOINT PER DETAIL 6/A-3.4.
10. EXISTING CASH AND PRESENTER BOOTH DRIVE-THRU WINDOWS TO REMAIN.
11. PRIME & PAINT EXISTING ROOF ACCESS LADDER. COLOR: TO MATCH BASE PAINT COLOR.
12. EXISTING BOLLARD TO BE PAINTED SAFETY YELLOW.
13. STAINLESS STEEL GUARD RAIL. REFER TO THE SITE PLAN FOR DETAILS.
14. EXISTING HOSE BIB TO REMAIN.
15. EXISTING BULK CO2 FILL BOX TO REMAIN.
16. EXISTING BULK OIL FILL BOX TO REMAIN.
17. NEW STEP FOOTINGS, AS PER STRUCTURAL SHEETS.
18. NEW GUTTERS AND DOWNSPOUTS PER ROOF PLAN SHEET A-102. COLOR TO MATCH FIELD COLOR PER COLOR TABLE, THIS SHEET.

MATERIAL COLOR TABLE	
1.) ALL COLORS LISTED HERE UNLESS DESCRIBED IN THE KEYED NOTES. 2.) ALL PAINT COLORS LISTED ARE BY: BENJAMIN MOORE	
CORE 16 MRP COLOR SCHEME	CRAFTSMAN
ARCADE WALL E.I.F.S.	BM IRON MOUNTAIN (2134-30)
FIELD PAINT COLOR	BM FAIRVIEW TAUPE HC-85
PAINT COLOR FOR METAL UTILITY DOORS AND FRAMES	MATCH BUILDING BASE PAINT COLOR

CORRUGATED METAL PANEL SYSTEM NOTES:

- A. COORDINATE METAL PANELS WITH RAIN DRAINAGE WORK, FLASHING, TRIM, PARAPET WALLS AND OTHER ADJOINING WORK TO PROVIDE A LEAKPROOF, SECURE AND NONCORROSIVE INSTALLATION. PREFORMED 7/8" PANEL SHALL BE FABRICATED OF 24 GA STEEL; PANELS ARE LAPPAABLE. COLOR SHALL BE CITYSCAPE. FINISH SHALL BE KYNOL 600. ACCESSORIES/FASTENERS: ALL FASTENERS WILL BE APPLIED IN ACCORDANCE WITH THE FASTENING SCHEDULE AS PROVIDED BY PANEL MANUFACTURER. FINISH AND COLOR TO MATCH WALL PANEL. APPLY SEALANT TAPE OR CAULKING AS NECESSARY AT FLASHING AND PANEL JOINTS TO PREVENT WATER PENETRATION.
- B. CUTS MADE TO PANELS IN THE FIELD SHALL BE DONE WITH A "COLD CUT" PROCESS ONLY, I.E. POWER NIBBLER, HEAT OR FRICTION CUT WITH AN ABRASIVE OR BLADE SHALL NOT BE USED.
- C. WHERE HORIZONTAL CUTS ALONG THE LENGTH OF THE PANEL ARE MADE, CARE SHOULD BE TAKEN TO MAKE THE CUTS AT THE TOP OF THE PANEL, WHERE IT IS CONCEALED BY THE FASCIA. VERTICAL CUTS ALONG THE HEIGHT OF THE PANEL SHALL BE LAPPED UNDER AN ADJOINING PANEL OR CONCEALED UNDER TRIM, I.E. "J" TRIM AT CORNERS.

CORRUGATED PANEL, FASCIAS, CLOSURES & FASTENERS BY:
METAL-ERA (800) 558-2162 www.metalera.com

1. UNDERLAYMENT (SOLID SUBSTRATE) EXTERIOR GRADE PLYWOOD: ICE AND WATER SHIELD MEMBRANE OVER PLYWOOD. (ALT. - ONE LAYER OF 30# FELT).

E.I.F.S. GENERAL NOTES:

E.I.F.S. EXPANSION JOINTS PER MFG. THE FOLLOWING REQUIREMENTS ARE BASED ON DRYVIT MANUFACTURING STANDARDS. AS A MINIMUM, EXPANSION JOINTS SHALL BE PLACED AT THE FOLLOWING LOCATIONS:

1. WHERE EXPANSION JOINTS OCCUR IN THE SUBSTRATE SYSTEM.
2. WHERE BUILDING EXPANSION JOINTS OCCUR.
3. AT FLOOR LINES IN WOOD FRAME CONSTRUCTION.
4. AT FLOOR LINES OF NON-WOOD FRAMED BUILDINGS WHERE SIGNIFICANT MOVEMENT IS EXPECTED.
5. WHERE THE OUTSULATION PLUS SYSTEM ABUTS DISSIMILAR MATERIALS.
6. WHERE THE SUBSTRATE TYPE CHANGES.
7. WHERE PREFABRICATED PANELS ABUT ONE ANOTHER.
8. IN A CONTINUOUS ELEVATION AT INTERVALS NOT EXCEEDING 75 FEET.
9. WHERE SIGNIFICANT STRUCTURAL MOVEMENT OCCURS, SUCH AS CHANGES IN ROOFLINE, BUILDING SHAPE OR STRUCTURAL SYSTEM.

EXTERIOR ELEVATIONS

MAJOR REMODEL PROJECT

MCDONALD'S RESTAURANT (SITE ID # 480270)
1020 NORTH ROCHESTER STREET
MUKWONAGO, WISCONSIN

[illegible]