



Mukwonago Fire Department Annual Report 2015

www.mukwonagofire.org

Table of Contents

Mission/ Vision Statement.....	3
Core Values.....	4
Chief's Report.....	5
Role of Mukwonago Fire Department Personnel.....	6
Executive Summary.....	10
Fire	
Total Number of Incidents.....	10
Fire Incidents by District.....	11
Fire Incident Type.....	13
Fire Incident Alarm Time Analysis.....	14
Fire Incident by Day of the Week/Shift.....	15
Emergency Medical Services	
EMS Runs by City.....	16
Times of EMS calls by Day of the Week.....	17
Ambulance Primary Role of Unit.....	18
Transport Hospital.....	18
CPR Report.....	19
Apparatus	
Engines.....	22
Specialty Apparatus.....	23
Water Operations.....	24
Personnel Vehicles.....	25
Ambulances.....	26



Mission Statement

It is the mission of the Mukwonago Fire Department to provide a range of programs designed to protect the lives and property of the inhabitants of the Village and Town of Mukwonago from the adverse effects of fire, sudden medical emergencies or exposure to any dangerous condition created by either man or nature.

Vision Statement

The Mukwonago Fire Department will continually strive to exceed our citizen's expectations working within a healthy, safe and innovative environment that enhances the professional and efficient delivery of emergency services. We also strive to be an organization providing community safety education and information keen to anticipate, influence and embrace change

Core Values

Integrity – openness, honesty, loyalty and honor; leading through example to achieve a common goal by actions

Professional Development – commitment to continually expand the abilities of personnel, encourage continuous education and advancement opportunities as becoming officers

Accountability – all personnel, management and otherwise providing a level of accountability to each other and the community and the implementation of responsible measuring

Teamwork – develop and maintain a sense of family camaraderie and loyalty to one another and to the community; provide a sense of help and encouragement for all and by all

Innovation – progressive, pro-active, modern, open and creative; open and receptive to all input and feedback

Chief's Report

I appreciate you taking the time to see whom we are and what we do. Should you have further questions or are interested in joining this organization you can contact us. We are always looking for additional highly motivated and team oriented people to join our staff.

2015 picked up where 2014 left off. In March MFD responded to a report of a fire at the apartments above the Fork in the Road. Flames were coming out of the windows on the A-side. The crews from several departments were able to extinguish the fire but there was a fatality located in the apartment. During a lightning storm in April MFD responded to a structure fire in the town. First in units found heavy fire coming through the roof. Due to high winds and bad weather a MABAS request went to the 3rd alarm. Fortunately there were no injuries. Numerous motor vehicle collisions also occurred. The DNG clinic finished construction and is now a stand-alone ER. MFD completed a transition to Critical Care Paramedics and had our State EMS Operations Plan approved. The ER is having an estimated 800 contacts a month and MFD is transporting 10% of them as inter-facility transports. This is resulting in an estimated 46% increase in call volume.

The department was able to staff with Paid on Premise (POP) personnel to assist the full time staff with their duties such as inspections and every day responsibilities. MFD is in the process of establishing a hiring list for additional fulltime staff. In 2015 we have three POP on staff from 6pm to 6am seven days a week. We purchased a new Paramedic Intercept vehicle, 2016 Chevrolet Tahoe, a new grass truck, 2016 Ford F350, repainted the 2009 Chevrolet Suburban and will be designated as Command 2, 1989 Chevrolet truck will become the utility vehicle. I encourage everyone to stop in and see the new apparatus.

MFD was fortunate to receive the following grants in 2015: \$1000 from the Mukwonago Kiwanis for Maxwell Street No Parking signs, WI DNR Grant for \$4400.00 and a donation of 250 smoke alarms from Home Depot..

Everyone is welcome any time to stop in and meet your firefighters and look at your apparatus. As well as responding to calls members spent numerous hours in training and education to keep their skills at top levels. Enjoy the following more detailed information in the following pages.

Sincerely,

Jeffrey R. Stien
Fire Chief

Role of Mukwonago Fire Department Personnel

Save life, protect property, render assistance... AND...

The role of today's fire department personnel is quite different from that of years past. The fire service is constantly changing to meet the needs of the community under ever changing times.

Mukwonago Fire Department Personnel need to possess certain attributes in order to be successful in the role of Firefighter/EMT; commitment, dedication, integrity, confidence, resilience, adaptability, effective communication skills.

A common image of the firefighter is that of fighting fires. The reality is this is a small fraction of the role. Personnel are cross-trained in fire and EMS to more effectively utilize the limited number of personnel on the Mukwonago Fire Department. Fire and EMS personnel function in a multi-faceted role within these common areas:

Prevention

Inspection and education activities that prevent fire, aid in rapid extinguishment, or limiting the loss of life and property.

- Business, school, residential facility, and home safety inspections
- Education presentations in daycare facilities and schools
- Facility tours
- Open house and other public relations activities to enhance the public's perception of the Mukwonago Fire Department.
- Maintain excellent working relationships with other local departments such as Police and Department of Public Works.

Preparation

Maintaining all aspects of the Mukwonago Fire Department and its Personnel in a state of readiness.

- Routine apparatus and equipment checks – observing and checking for needed repairs, replacement, expirations and deficiencies
- Cleaning – apparatus and equipment will last longer and function when needed if it is kept clean. Station cleaning is also important in preparation should the need to open our doors for displaced members of the community.
- Personnel ensuring their own fitness levels are such that they are prepared for the physically and mentally demanding work.

- In house training monthly for EMT's, Paramedics, Fire Department, Duty Company, and Rapid Intervention Crew. In addition, seasonal training for the Dive Team.
- External training at WCTC, Gateway Technical College, seminars or other experiential opportunities to further the knowledge of Mukwonago Fire Department Personnel and to stay current with ever changing technologies.
- Perform administration duties related to records and documentation, thus promoting an overall efficient operation of the Mukwonago Fire Department.

Protection

Programs in place to protect Mukwonago Fire Department Personnel and the community in the event of an emergency.

- Vaccinations against influenza, scheduled TB skin tests, scheduled personal protective equipment inspections and routine cleaning.
- Code and ordinance enforcement.

Response

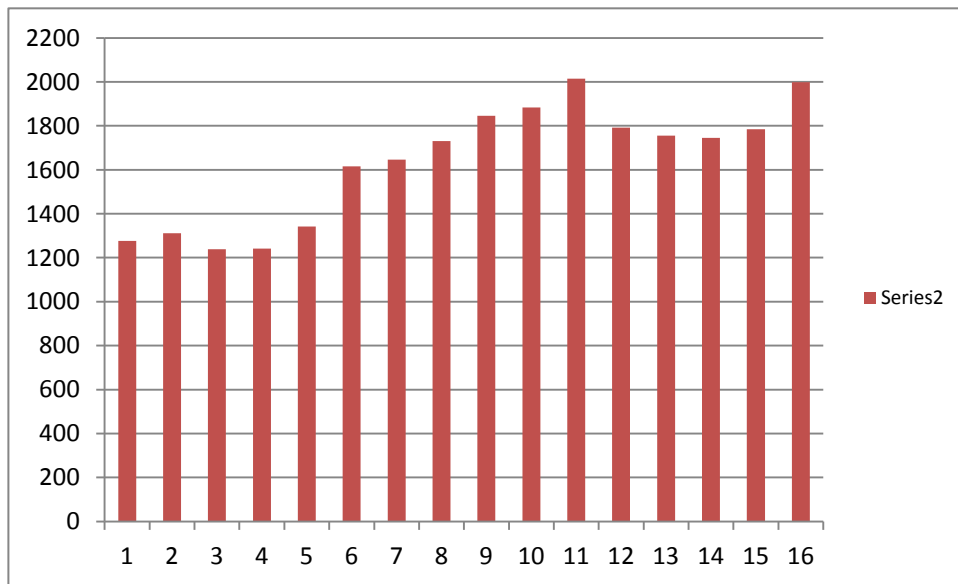
Putting necessary items into place to expedite the response of Mukwonago Fire Department in the event of an emergency and safely mitigate any incident.

- Driver training and education regarding safe and prompt responses.
- Familiarizing all personnel with the Mukwonago community.
- Updating all maps of the Mukwonago community and surrounding areas.
- Familiarizing personnel in the use of GPS units in all apparatus.
- Be prepared for incidents that not only involve fire and medical emergencies but also:
 - Motor vehicle accidents
 - Hazardous materials leaks
 - Railroad incidents
 - Water and Ice emergencies
 - Natural disasters, and
 - Any other response for which we are called.
- Operate apparatus such as engines, aerial devices, water tenders, trailers, ambulances and support vehicles within the vehicle's design parameters so that the apparatus is used safely and effectively.
- Responsible for all firefighting duties involved in the incident necessary to save lives and property, combat, extinguish and/or prevent fires and effectively perform these duties as required under emergency conditions frequently involving considerable hazards.

- Provide medical assistance and administer medical procedures to stabilize a patient's condition and prepare them for transport to medical care facilities.
- Safely perform rescue operations for the victim and rescue personnel.

Total EMS and Fire Calls

Year	Total	EMS	Fire	% Change
2000	1277			0.0
2001	1312			2.7
2002	1239			-5.6
2003	1241			0.2
2004	1342			8.1
2005	1615			20.3
2006	1646	1361	285	1.9
2007	1730	1426	304	5.1
2008	1845	1537	308	6.6
2009	1883	1625	258	2.1
2010	2015			7.0
2011	1791	1563	228	-11.1
2012	1756	1508	248	-2.0
2013	1745	1497	248	-0.6
2014	1784	1531	253	2.2
2015	1998	1719	279	12.0



Executive Summary

FIRE



Total Number of Incidents 279

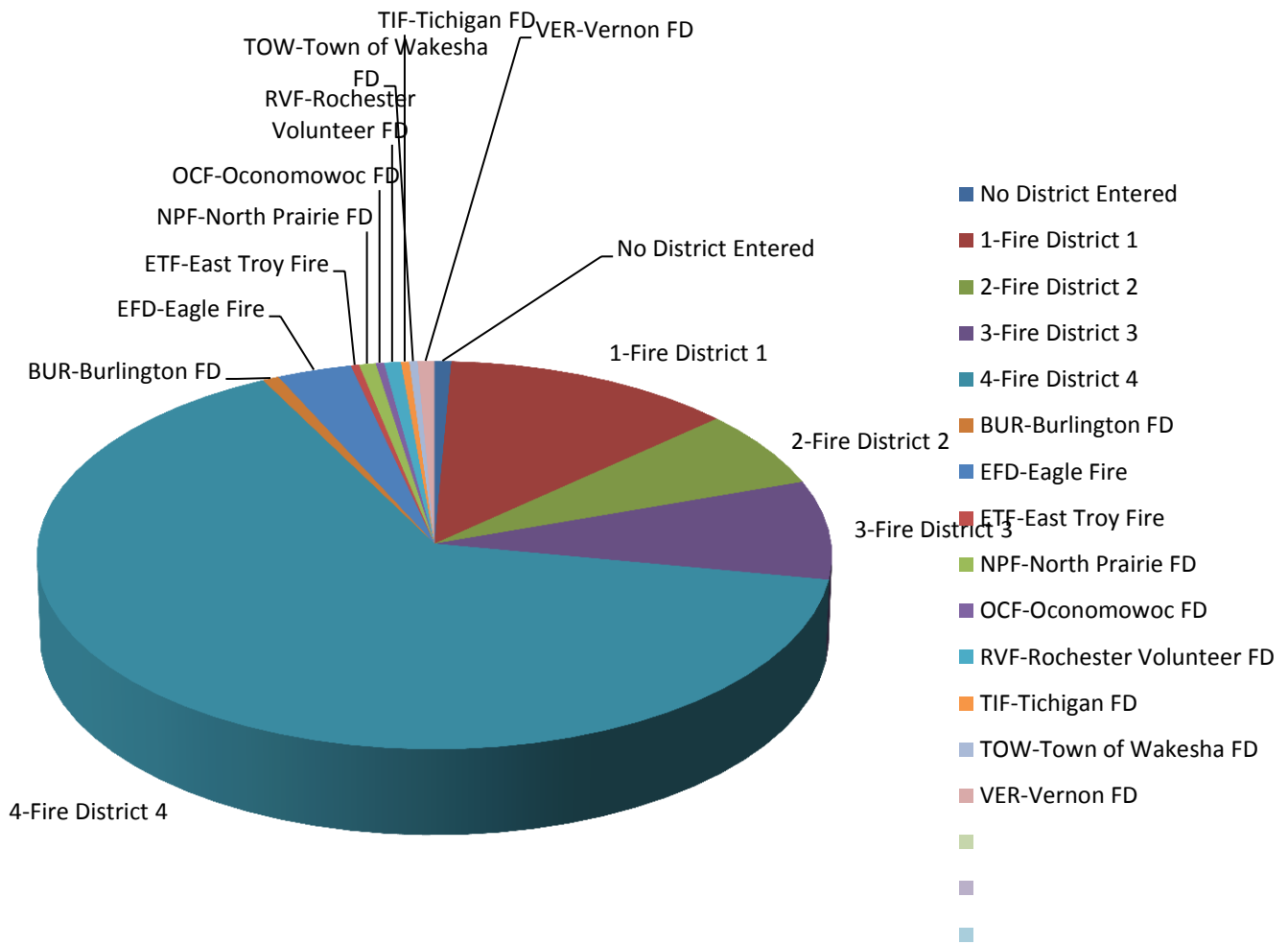
Fire Incidents by District

Districts Responded

Printed On: 01/26/16 13:47

<i>District</i>	Date Range#1		Date Range#2	
	01/01/2014 - 12/31/2014		01/01/2015 - 12/31/2015	
	<i># of Inc</i>	<i>% of Total</i>	<i># of Inc</i>	<i>% of Total</i>
No District Entered	1	0.40%	2	0.72%
1-Fire District 1	24	9.72%	35	12.54%
2-Fire District 2	17	6.88%	18	6.45%
3-Fire District 3	25	10.12%	23	8.24%
4-Fire District 4	168	68.02%	180	64.52%
BUR-Burlington FD	1	0.40%	2	0.72%
EFD-Eagle Fire	2	0.81%	9	3.23%
ETF-East Troy Fire	2	0.81%	1	0.36%
NPF-North Prairie FD	4	1.62%	2	0.72%
OCF-Oconomowoc FD	0	0.00%	1	0.36%
RVF-Rochester Volunteer FD	1	0.40%	2	0.72%
TIF-Tichigan FD	1	0.40%	1	0.36%
TOW-Town of Waukesha FD	0	0.00%	1	0.36%
VER-Vernon FD	1	0.40%	2	0.72%
Total	247	100.00%	279	100.00%

Fire District 1, 2, 3 are the Town of Mukwonago and District 4 is the Village of Mukwonago.



Types of Incidents**NFIRS Incident Type - Comparison**

Printed On: 01/26/16 13:55

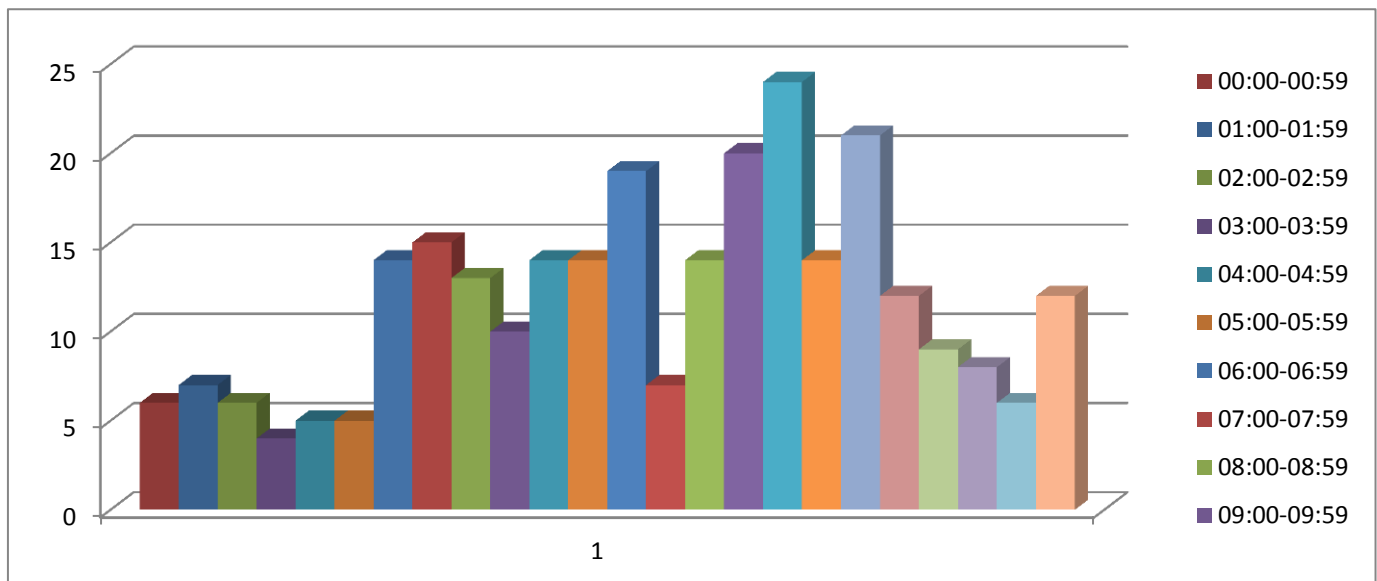
<i>Incident Type Group</i>	Date Range#1		Date Range#2	
	01/01/2014 - 12/31/2014		01/01/2015 - 12/31/2015	
	<i># of Inc</i>	<i>% of Total</i>	<i># of Inc</i>	<i>% of Total</i>
11-Structure Fire	18	7.76%	29	10.39%
13-Mobile property (vehicle) fire	2	0.86%	3	1.08%
14-Natural vegetation fire	8	3.45%	9	3.23%
16-Special outside fire	0	0.00%	1	0.36%
17-Cultivated vegetation, crop fire	0	0.00%	1	0.36%
30-Rescue, emergency medical call (EMS), other	2	0.86%	1	0.36%
31-Medical assist	11	4.74%	16	5.73%
32-Emergency medical service (EMS)	57	24.57%	61	21.86%
34-Search for lost person	3	1.29%	1	0.36%
35-Extrication, rescue	1	0.43%	3	1.08%
36-Water or ice-related rescue	1	0.43%	1	0.36%
38-Rescue or EMS standby	0	0.00%	1	0.36%
41-Combustible/flammable spills & leaks	5	2.16%	12	4.30%
42-Chemical release, reaction, or toxic condition	2	0.86%	5	1.79%
44-Electrical wiring/equipment problem	13	5.60%	13	4.66%
46-Accident, potential accident	12	5.17%	4	1.43%
52-Water problem	1	0.43%	2	0.72%
53-Smoke, odor problem	3	1.29%	3	1.08%
55-Public service assistance	2	0.86%	3	1.08%
57-Cover assignment, standby at fire station, move-up	2	0.86%	7	2.51%
60-Good intent call, other	3	1.29%	3	1.08%
61-Dispatched and canceled enroute	22	9.48%	35	12.54%
65-Steam, other gas mistaken for smoke	12	5.17%	7	2.51%
67-Hazmat release investigation w/ no hazmat	4	1.72%	4	1.43%
70-False alarm and false call, other	13	5.60%	2	0.72%
73-System or detector malfunction	20	8.62%	19	6.81%
74-Unintentional system/detector operation - no fire	15	6.47%	30	10.75%
81-Severe weather or natural disaster	0	0.00%	1	0.36%
90-Special type of incident	0	0.00%	1	0.36%
91-Citizen complaint	0	0.00%	1	0.36%
Total	232	100.00%	279	100.00%

Fire Incidents Alarm Time Analysis

Calls by Time of Day (NFIRS)

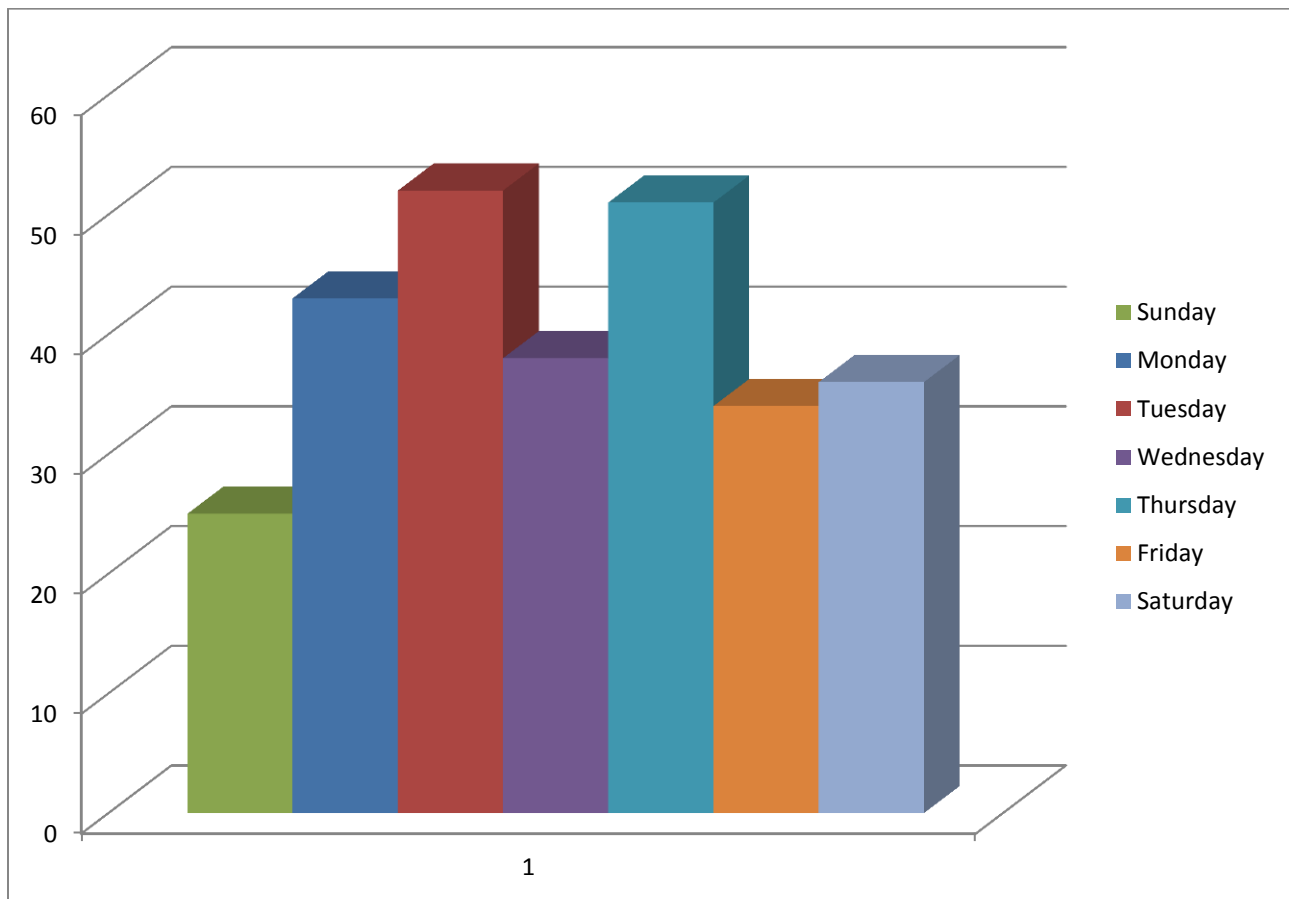
<i>Time Period</i>	Date Range#1			Date Range#2		
	01/01/2014 - 12/31/2014			01/01/2015 - 12/31/2015		
	<i>Calls</i>	<i>Avg App./Call</i>	<i>Avg Staff/Call</i>	<i>Calls</i>	<i>Avg App./Call</i>	<i>Avg Staff/Call</i>
00:00-00:59	3	1.61	1.91	6	2.51	2.58
01:00-01:59	2	0.67	0.86	7	3.83	3.74
02:00-02:59	2	1.07	1.06	6	1.85	2.39
03:00-03:59	0	0.00	0.00	4	2.11	2.39
04:00-04:59	5	2.15	2.44	5	2.77	2.71
05:00-05:59	4	1.74	1.91	5	2.51	2.77
06:00-06:59	5	2.55	2.37	14	4.75	4.84
07:00-07:59	13	4.43	4.42	15	5.41	5.48
08:00-08:59	11	4.03	3.89	13	2.51	2.71
09:00-09:59	10	2.82	2.64	10	3.17	2.71
10:00-10:59	10	2.82	3.30	14	3.96	3.87
11:00-11:59	17	5.23	4.55	14	4.75	4.52
12:00-12:59	16	6.85	5.61	19	6.60	5.74
13:00-13:59	14	5.64	5.15	7	2.77	2.13
14:00-14:59	10	3.36	3.17	14	3.96	3.81
15:00-15:59	14	5.64	5.34	20	6.07	5.81
16:00-16:59	14	5.10	5.21	24	7.78	7.42
17:00-17:59	21	6.44	5.94	14	5.01	4.52
18:00-18:59	19	9.13	9.23	21	8.18	8.58
19:00-19:59	13	6.71	7.12	12	4.09	5.03
20:00-20:59	20	7.65	8.58	9	4.22	3.81
21:00-21:59	12	5.50	5.87	8	3.69	4.39
22:00-22:59	10	4.83	5.08	6	2.77	2.90
23:00-23:59	8	4.03	4.35	12	4.75	5.16

NFIRS Calls by the Time of Day



Fire Incidents by the Day of the Week/Shift

<i>Day of Week</i>	Date Range#1			Date Range#2		
	01/01/2014 - 12/31/2014			01/01/2015 - 12/31/2015		
	<i>Calls</i>	<i>Avg App./Call</i>	<i>Avg Staff/Call</i>	<i>Calls</i>	<i>Avg App./Call</i>	<i>Avg Staff/Call</i>
Sunday	32	15.03	14.58	25	9.89	10.65
Monday	41	16.11	15.04	43	15.96	15.35
Tuesday	26	9.93	9.96	52	18.87	17.94
Wednesday	28	12.48	12.27	38	11.87	12.71
Thursday	38	12.62	12.80	51	17.41	16.52
Friday	50	18.39	18.01	34	11.74	11.61
Saturday	38	15.44	17.35	36	14.25	15.23



Emergency Medical Services



EMS Runs by City

Runs by City Report
From 01/01/15 To 12/31/15

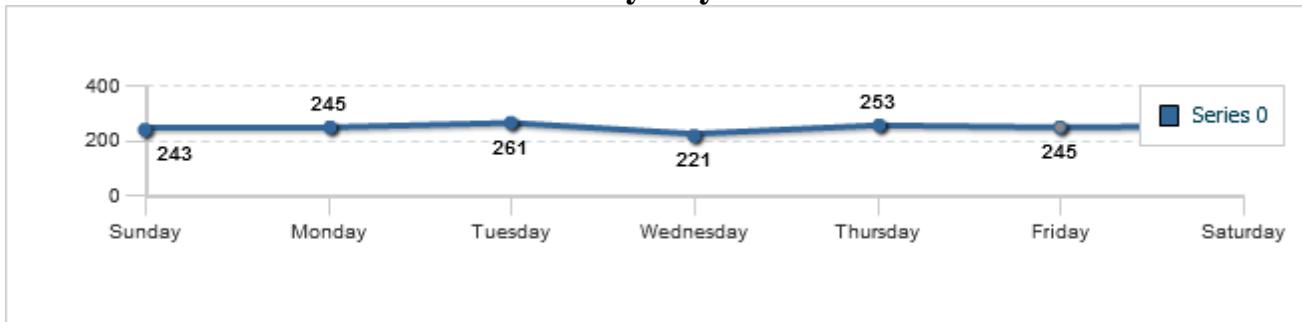
City	# of Runs	% of Runs
Big Bend	11	0.64%
Burlington	1	0.06%
Eagle	39	2.27%
East Troy	237	13.79%
Mukwonago	1198	69.69%
Mukwonago (Town of)	201	11.69%
North Prairie	17	0.99%
Oconomowoc (Town of)	1	0.06%
Vernon (Town of)	8	0.47%
Waterford	5	0.29%
WAUKESHA	1	0.06%
Unknown	0	0.00%
Total	1719	100%

Times of EMS Calls by Day of the Week

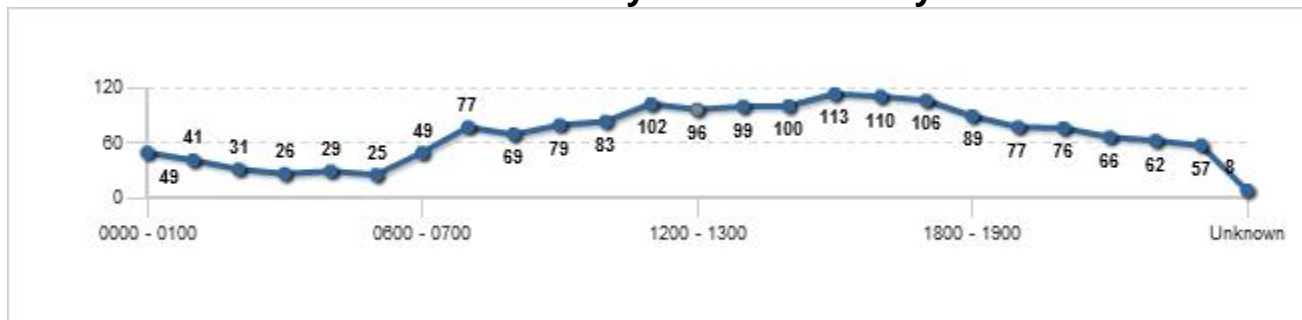
Times of Call Report
From 01/01/15 To 12/31/15

Time Period	Sunday	Monday	Tuesday	Wednesday	Thursday	Friday	Saturday	Total	Percentage
0000 - 0100	9	3	6	5	11	7	8	49	2.85%
0100 - 0200	3	9	11	3	7	3	5	41	2.39%
0200 - 0300	3	4	4	3	7	7	3	31	1.80%
0300 - 0400	7	2	1	4	4	4	4	26	1.51%
0400 - 0500	4	3	2	6	5	5	4	29	1.69%
0500 - 0600	3	4	8	2	4	2	2	25	1.45%
0600 - 0700	4	6	16	5	6	7	5	49	2.85%
0700 - 0800	14	12	9	8	9	12	13	77	4.48%
0800 - 0900	8	5	12	6	12	17	9	69	4.01%
0900 - 1000	11	13	9	14	13	11	8	79	4.60%
1000 - 1100	17	15	11	10	14	8	8	83	4.83%
1100 - 1200	13	15	13	13	8	17	23	102	5.93%
1200 - 1300	12	13	13	14	12	16	16	96	5.58%
1300 - 1400	16	17	13	11	17	15	10	99	5.76%
1400 - 1500	21	10	12	15	12	13	17	100	5.82%
1500 - 1600	16	16	19	19	14	13	16	113	6.57%
1600 - 1700	15	20	15	17	13	15	15	110	6.40%
1700 - 1800	15	13	20	15	13	13	17	106	6.17%
1800 - 1900	11	9	18	9	22	11	9	89	5.18%
1900 - 2000	11	15	9	11	9	12	10	77	4.48%
2000 - 2100	9	11	10	10	16	10	10	76	4.42%
2100 - 2200	6	11	8	8	10	10	13	66	3.84%
2200 - 2300	9	13	7	7	7	6	13	62	3.61%
2300 - 2400	5	4	15	4	8	10	11	57	3.32%
Unknown	1	2	0	2	0	1	2	8	0.47%
Total	243	245	261	221	253	245	251	1719	100%

Call Volume by Day of the Week



Call Volume by Hour of the Day



Ambulance Runs by Primary Role of Unit

Ambulance Runs by Primary Role of Unit

Primary Role of Unit	# of Times	% of Times
ALS Ground Transport	946	55.03%
BLS Ground Transport	270	15.71%
Critical Care Ground Transport	106	6.17%
ERU (Non-Transport)	1	0.06%
Non-Transport	363	21.12%
Other Transport	1	0.06%
Rescue	1	0.06%
Self Transport	2	0.12%
Supervisor	1	0.06%
Transport	27	1.57%
Unknown	1	0.06%
Total	1719	100%

Transport Hospital

Transport Hospital

Destination	# of Runs	% of Runs
AURORA LAKELAND MED CTR	1	0.06%
Aurora Med Center-West Allis	2	0.12%
AURORA MED CTR-SUMMIT	39	2.27%
Aurora Mem Hosp of Burlington	11	0.64%
CHILDREN'S HOSPITAL OF WI	20	1.16%
Clement J Zablocki VA Medical Center	5	0.29%
Columbia St Mary's - Milwaukee	1	0.06%
ELMBROOK MEMORIAL HOSPITAL	3	0.17%
FROEDTERT MEM. LUTHERAN HSP	18	1.05%
LAKELAND HEALTH CARE CENTER	14	0.81%
Not Applicable	3	0.17%
not transported	67	3.90%
OCONOMOWOC MEMORIAL HOSPITAL	20	1.16%
St Francis-Wheaton Franciscan-Milwaukee	2	0.12%
ST LUKES MED CTR	16	0.93%
WAUKESHA MEMORIAL HOSPITAL	1074	62.48%
WAUKESHA MEMORIAL OUTPATIENT CENTER	87	5.06%
No Destination	336	19.55%
Total	1719	100%

2015 CPR Report

As 2015 comes to an end we have seen many great changes within our CPR program. During this time period we continued to add more equipment to help facilitate a more productive learning environment, which in the end helped solidify the information that was being taught. Our CPR program has continued to exceed student expectations and deliver the necessary information in a detailed but understandable way. We have accomplished this goal by continuing to review new advancements provided by the American Heart Association as well as attending training updates, so the most up to date information can be reflected in our CPR classes. We take pride in being able to provide the most current information to our students so that they can be well informed and if necessary make a difference in someone's life. By educating the public it can provide our citizens with the knowledge to act in serious circumstances and overall result in better care for our citizens.

For the 2015 year we taught a total of 12 classes, which varied between Healthcare Provider and Heartsaver CPR. Our instructors get paid on an hourly basis and we paid out to our instructors a total amount of \$4,080.00 for their services and time. During the 2015 year we purchased two new choking teaching aids as well as pocket masks which can be used by students to facilitate the use of a barrier device during ventilations. We also needed to provide some maintenance to some of our CPR products as well as replacing some of our supplies, and in all we spent \$471.02. Now the money that was brought in from the CPR classes was \$3,860.00, which led us to an overall financial difference of negative \$691.02. In 2015 we implemented some new stipulations and price differences which has dramatically lessened the loss that was incurred by the fire department when doing these classes. However, it is apparent that some more changes may need to be done in order to further reduce the price variance between the amount of money received, in comparison to what was paid out. Overall the 2015 year was very successful, and many new changes were implemented which created a better CPR program.

The Mukwonago Fire Department

Lieutenant H. Slocum – CPR Liaison

MUKWONAGO FIRE DEPARTMENT CPR PROGRAM

Healthcare Provider : 6 hours
 Heartsaver CPR/AED: 4 hours
 Heartsaver CPR/AED/First Aid: 8 hours

Instructors: \$30/hour

Healthcare Provider

Date	Students	Instructor
26-Jan	16	2
3-Feb	7	2
9-Mar	16	2
16-May	5	1
14-Jun	1	1
20-Jul	1	1
14-Nov	1	1

Heartsaver CPR/AED

Date	Students	Instructor
26-May	2	1

Heartsaver CPR/AED/First Aid

Date	Students	Instructor
15-Feb	6	1
11-Aug	9	2
18-Aug	7	4
25-Sep	5	2

Replacement Cards

Date	Students	Instructor
15-Jul	1	
27-Oct	1	

Deposits	Withdrawals
\$640.00	\$360.00
\$280.00	\$360.00
\$640.00	\$360.00
\$200.00	\$180.00
\$40.00	\$180.00
\$40.00	\$180.00
\$40.00	\$180.00
\$80.00	\$120.00
\$420.00	\$240.00
\$630.00	\$480.00
\$490.00	\$960.00
\$350.00	\$480.00
\$5.00	\$0.00
\$5.00	\$0.00

Total

\$3,860.00

-\$4,080.00

<i>Difference</i>	-\$220.00
--------------------------	------------------

Purchased Supplies 2015

Choking Trainers	\$267.95
Practi Trainer Masks	\$163.07
CPR Manikin Lungs	\$40.00
<i>Total</i>	\$471.02

Payments	\$3,860.00
Costs	\$4,080.00
Supplies	\$471.02
	-\$691.02

Engines



Vehicle: 3461 – Spartan Darley
Year Purchased: 1990
Approximate Cost: \$ 190,000
Replacement Year: 2017
Replacement Cost: \$ 625,000

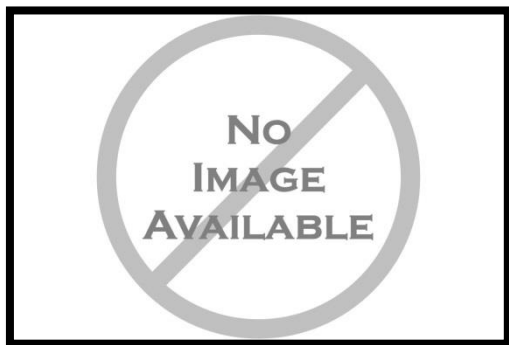
Vehicle: 3462 – 2002 Pierce Enforcer
Year Purchased: 2002
Approximate Cost: \$ 285,000
Replacement Year: 2025
Replacement Cost: \$ 400,000



Vehicle: 3463 – 2001 Pierce Enforcer Rescue
Style Pumper
Year Purchased: 2008
Approximate Cost: \$ 198,000
Replacement Year: 2021
Replacement Cost: \$ 400,000

Specialty Apparatus

Vehicle: 3471 – Rosenbauer Cobra 101'
Year Purchased: 2013
Approximate Cost: \$ 775,000
Replacement Year: 2032
Replacement Cost: \$ 975,000



Vehicle: 3482 – Ford F350
Year Purchased: 2016
Approximate Cost: \$ 37,819
Replacement Year: 2035
Replacement Cost: \$ 45,000

Vehicle: 3484 – 2008 6x6 and Trailer
Year Purchased: 2014
Approximate Cost: \$ 6,695
Replacement Year: 2028
Replacement Cost: \$ 15,000



Water Operations

(Ice and open water)



Vehicle: 3496 – 1998 Rescue One
Year Purchased: 1997
Approximate Cost: \$ 13,000
Replacement Year: 2024
Replacement Cost: \$30,000

Vehicle: 3487 – 2000 Freightliner Med Tec
Year Purchased: 2000
Approximate Cost: \$ 130,000
Replacement Year: TBD
Replacement Cost: \$ 200,000



Personnel Vehicles



Vehicle: 3481 – Chevrolet
Year Purchased: 1989
Approximate Cost: \$ 10,000
Replacement Year: 2020
Replacement Cost: \$40,000

Vehicle: 3488 – Chevrolet Tahoe
Year Purchased: 2015
Approximate Cost: \$45,000
Replacement Year: 2023
Replacement Cost: \$45,000



Vehicle: Car 1- 2015 Ford Interceptor
Year Purchased: 2014
Approximate Cost: \$30,000
Replacement Year: 2022
Replacement Cost: \$38,000



Vehicle: Car 2 – Chevrolet Suburban
Year Purchased: 2009
Approximate Cost: \$30,000
Replacement Year: 3488 will be rotated to this position
Replacement Cost: \$ 0.00

Ambulances

Vehicle: 3451 – 2007 Med Tec Ford E-350
Year Purchased: 2007
Approximate Cost: \$ 118,000
Replacement Year: 2015
Replacement Cost: \$ 142,000 (Remount)



Vehicle: 3452 – 2012 Med Tec Chevrolet 4500
Year Purchased: 2012
Approximate Cost: \$ 146,000
Replacement Year: 2021
Replacement Cost: \$ 147,000 Remount

2015 Annual Report Mukwonago Fire Department

Vehicle: 3453 – 2009 Med Tec Ford E-350

Year Purchased: 2009

Approximate Cost: \$ 130,000

Replacement Year: 2019

Replacement Cost: \$ 145,000 (Remount)

